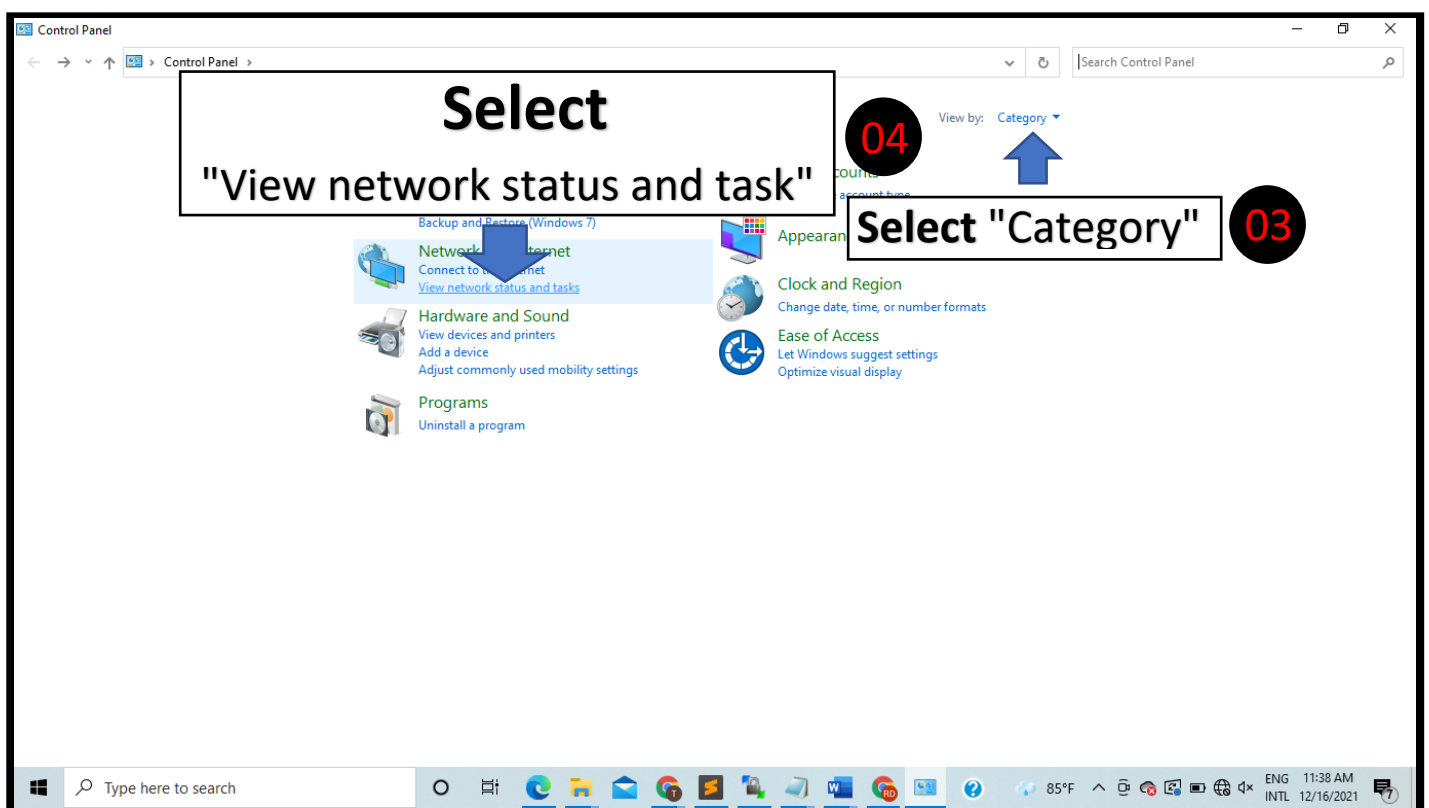
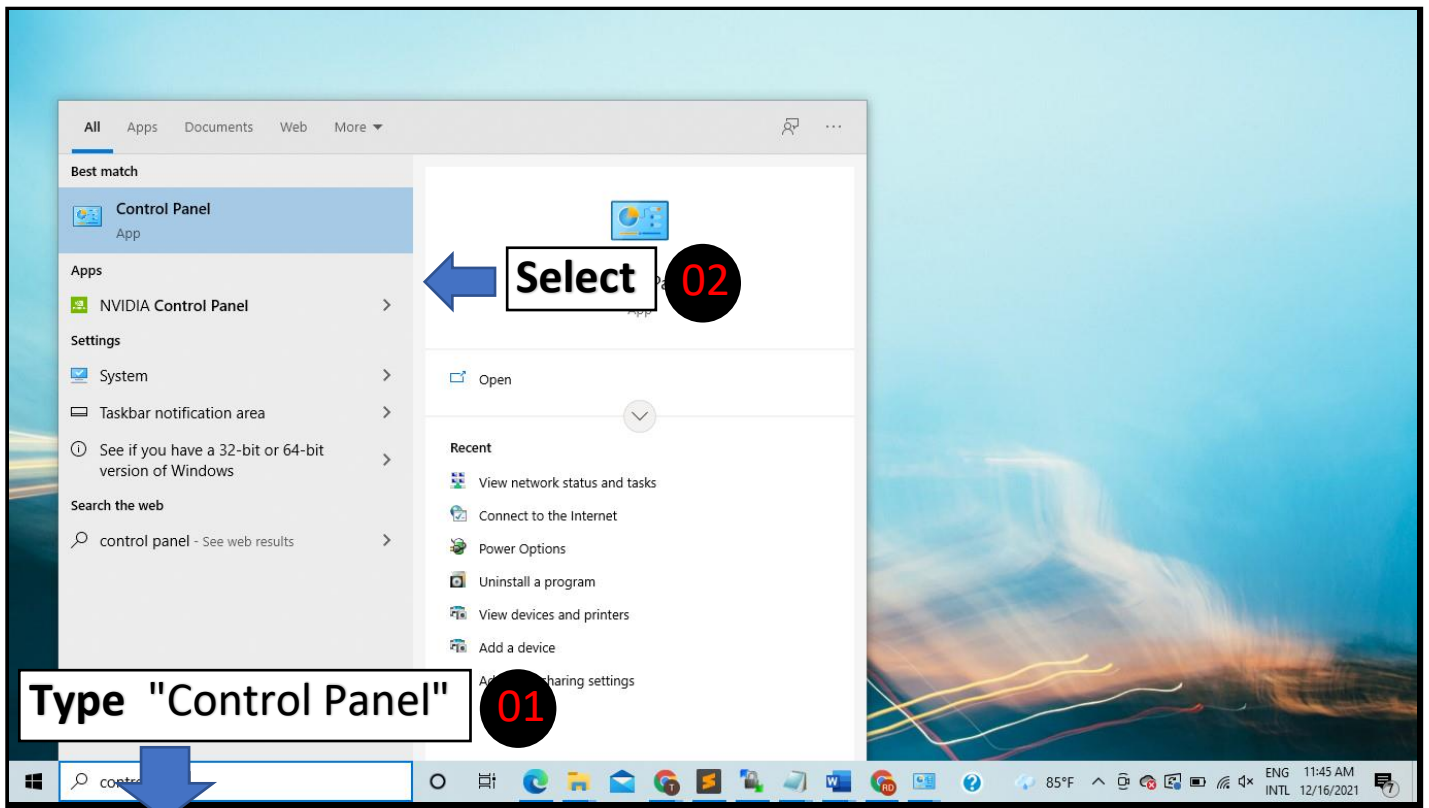
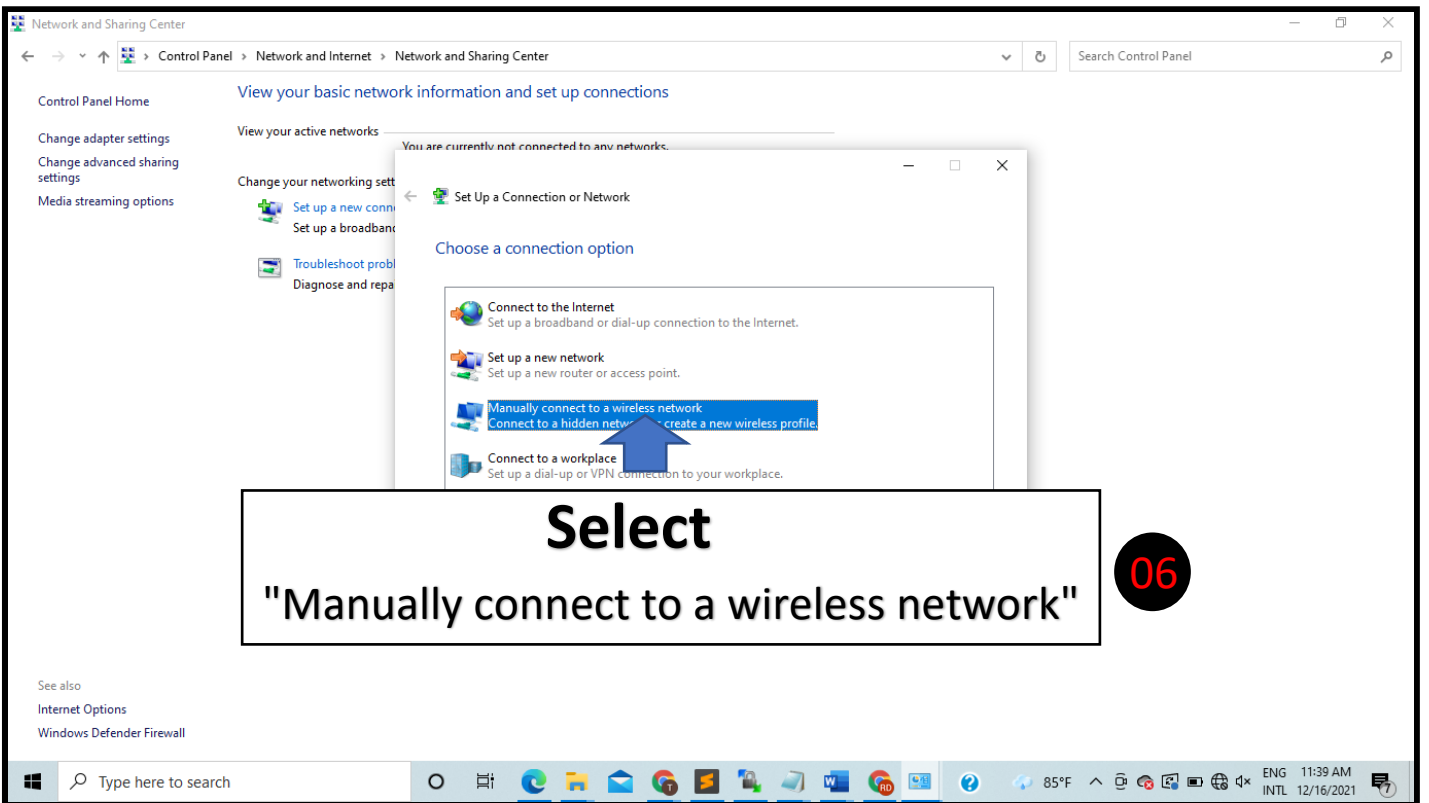
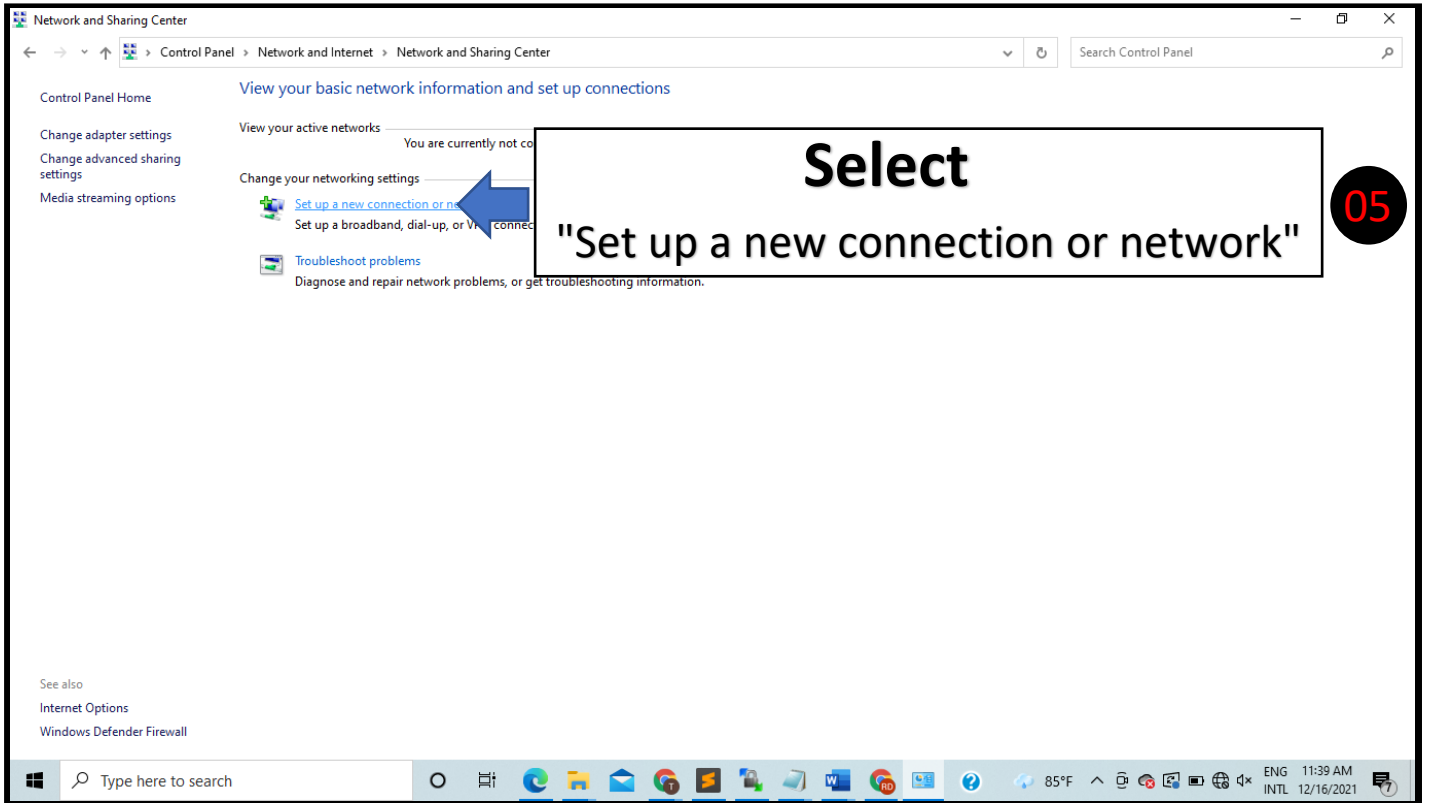
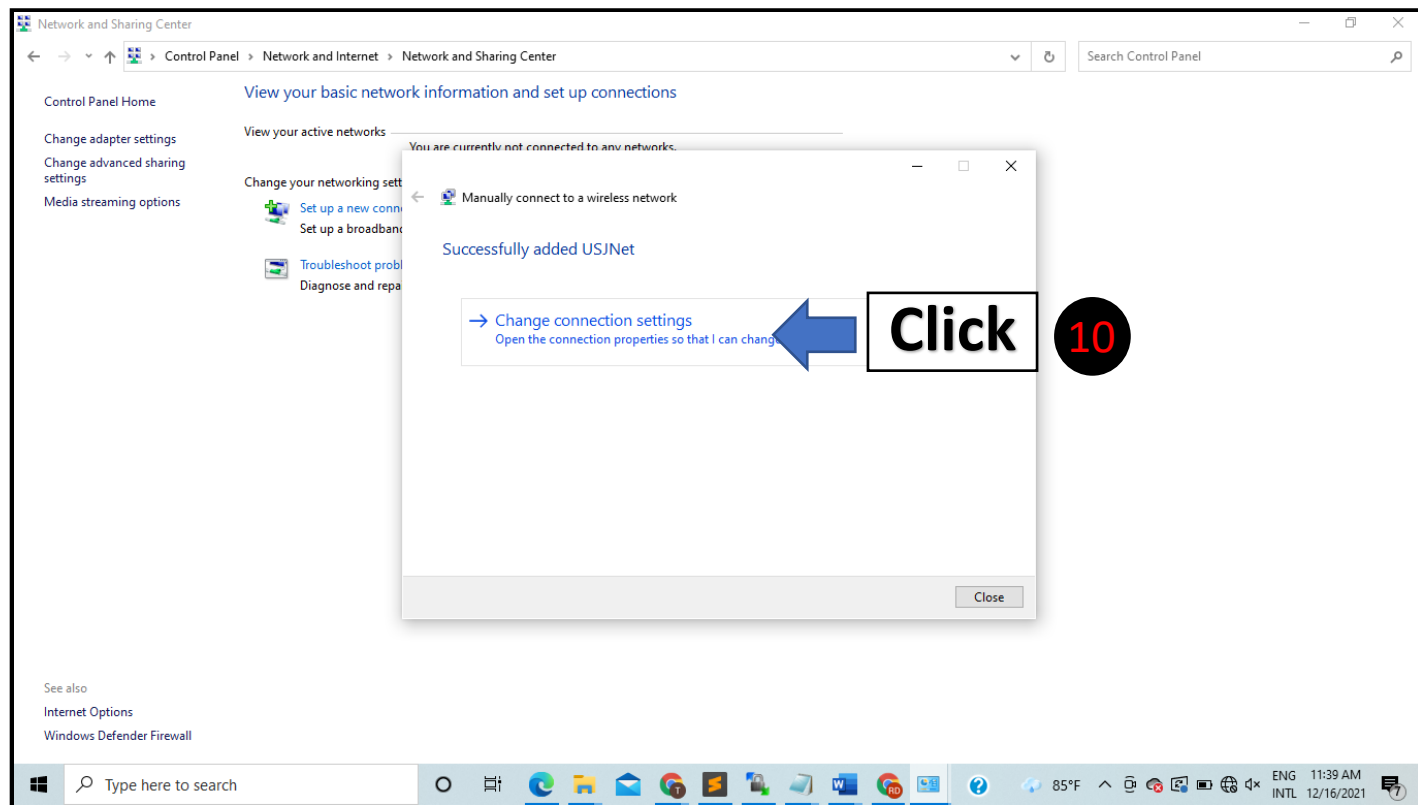
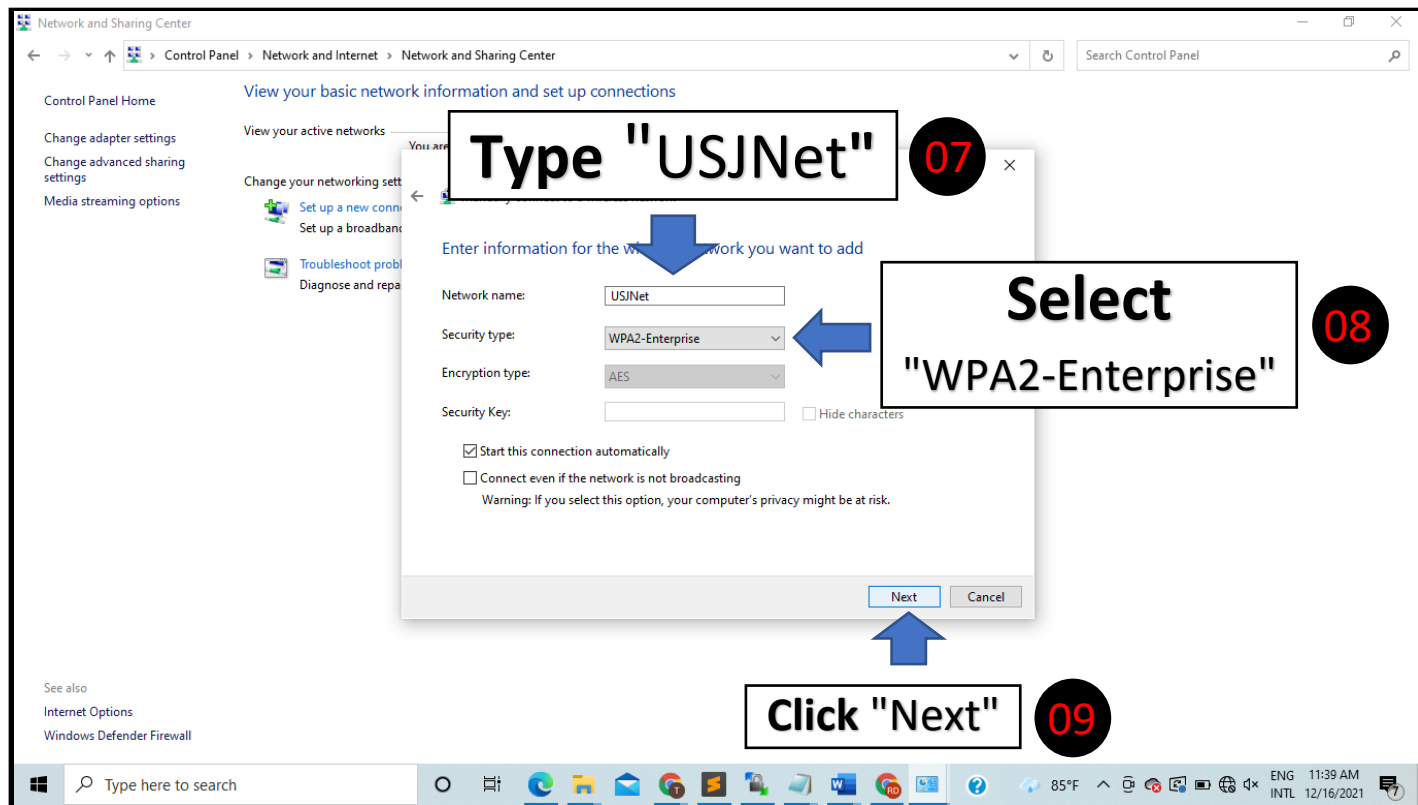
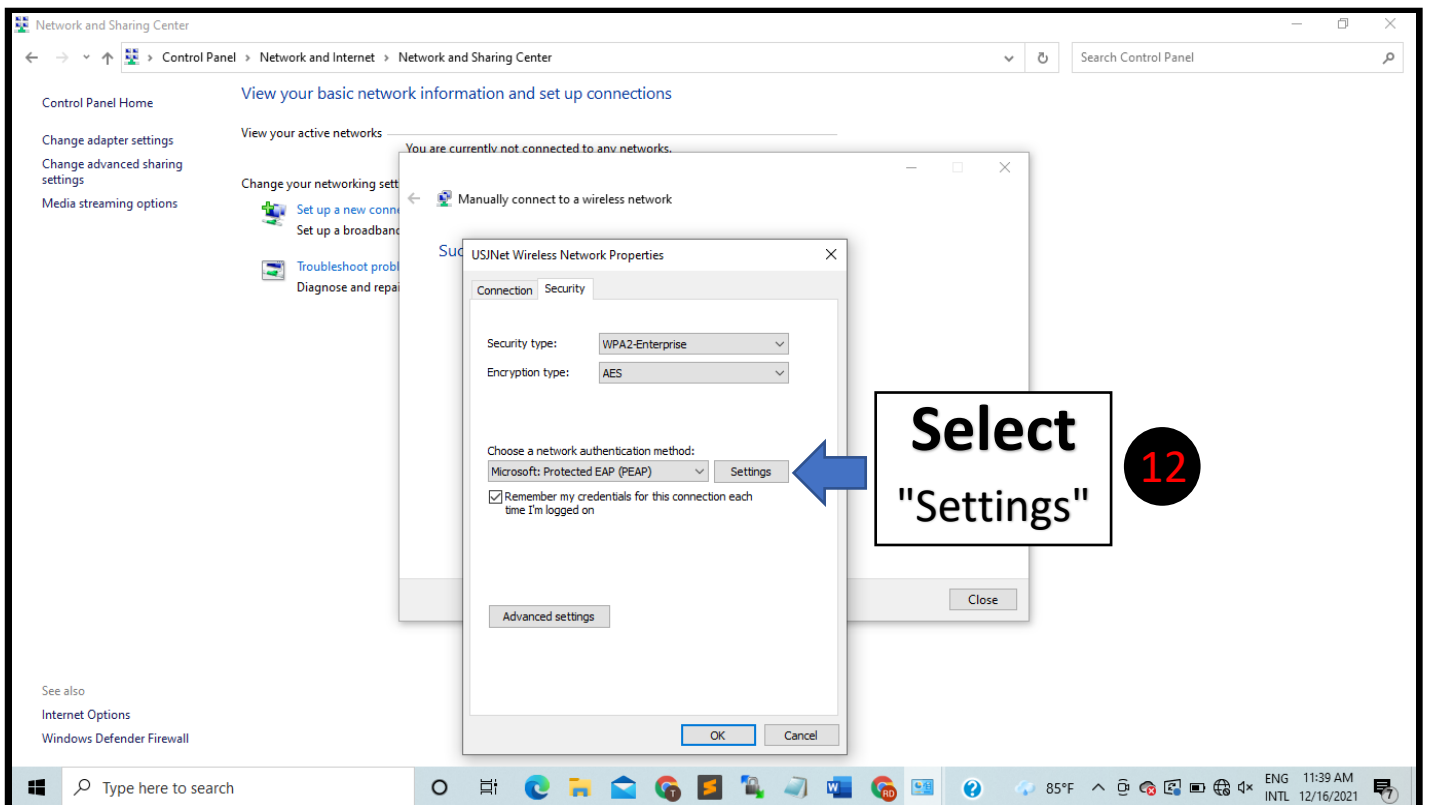
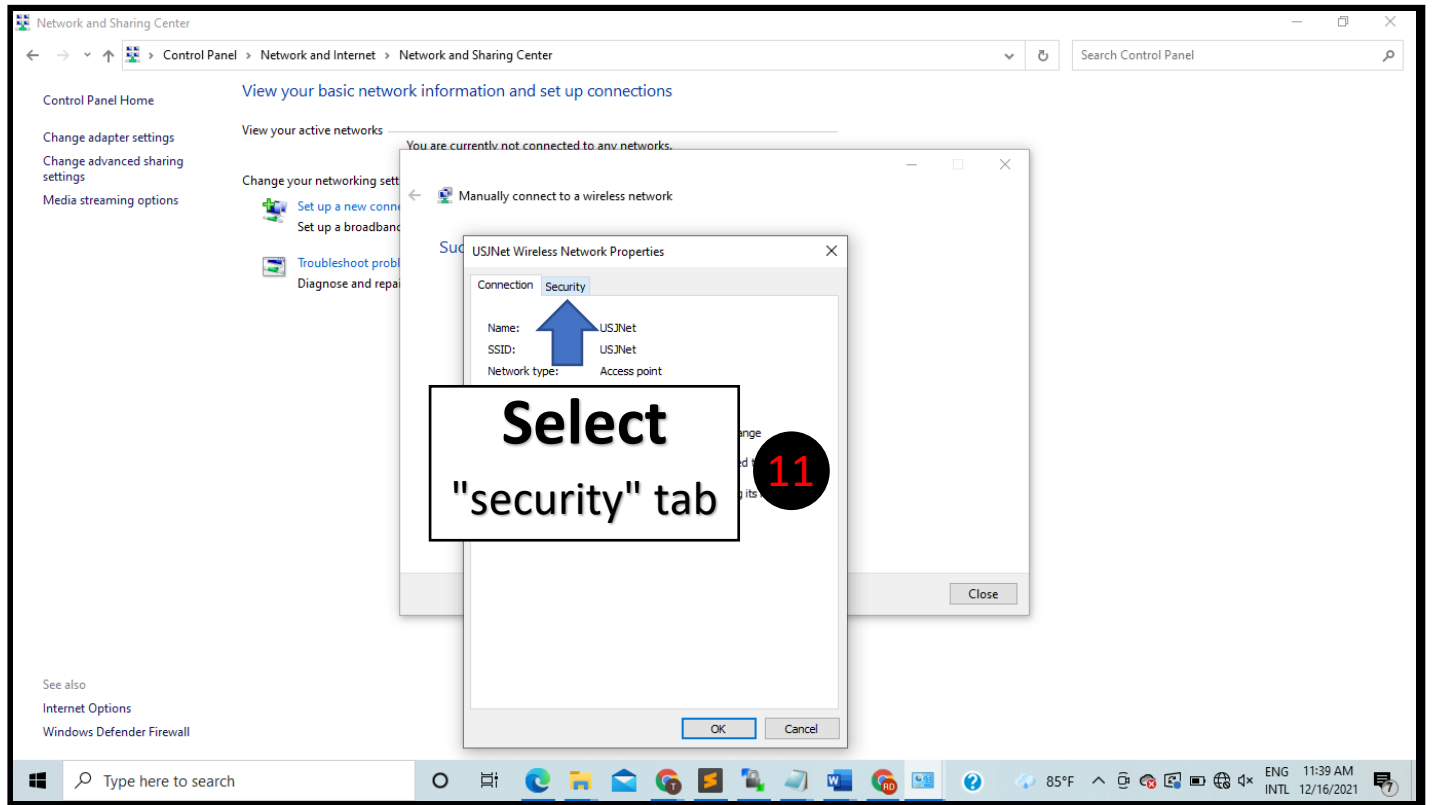


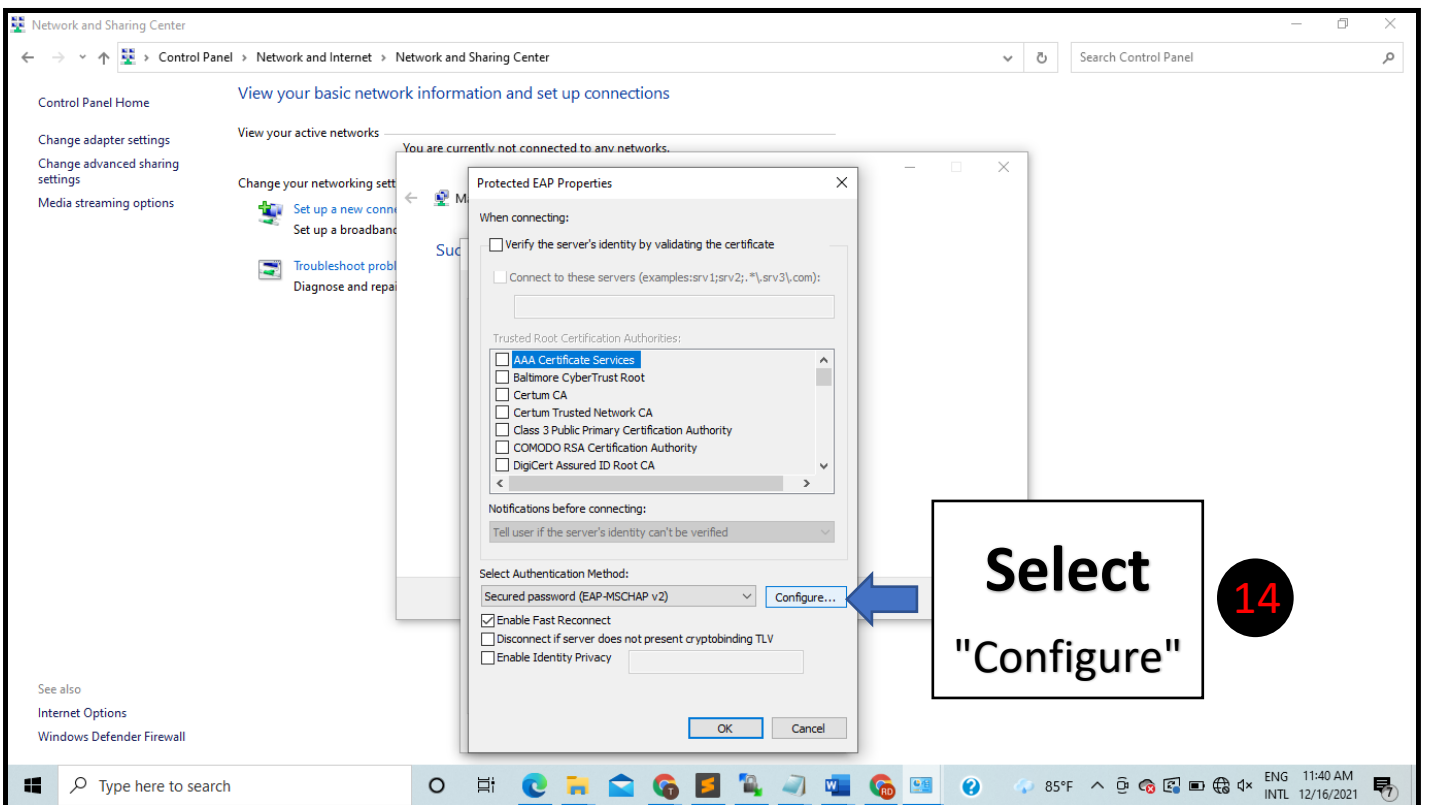
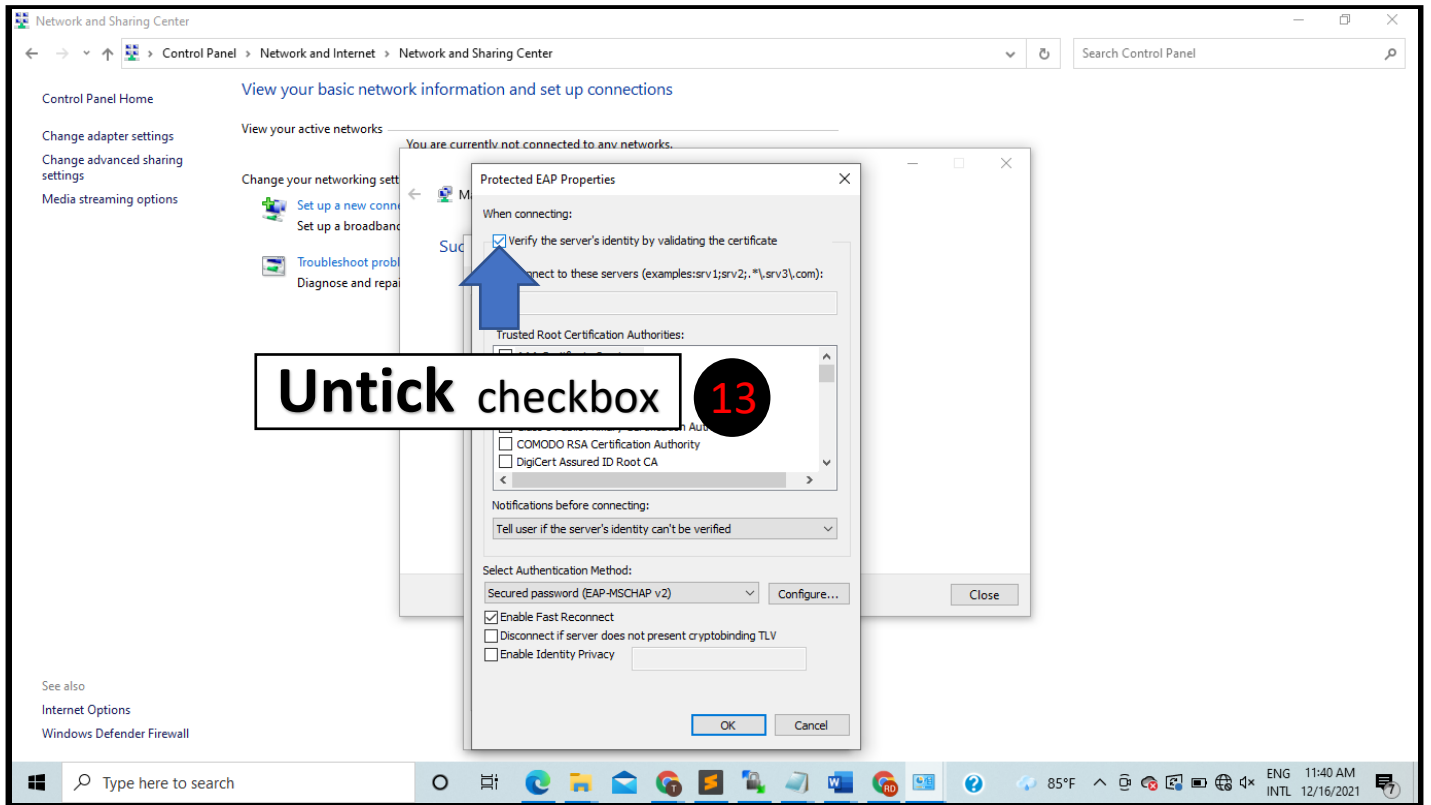
How to configure my Laptop Computer to access USJNet Wi-Fi

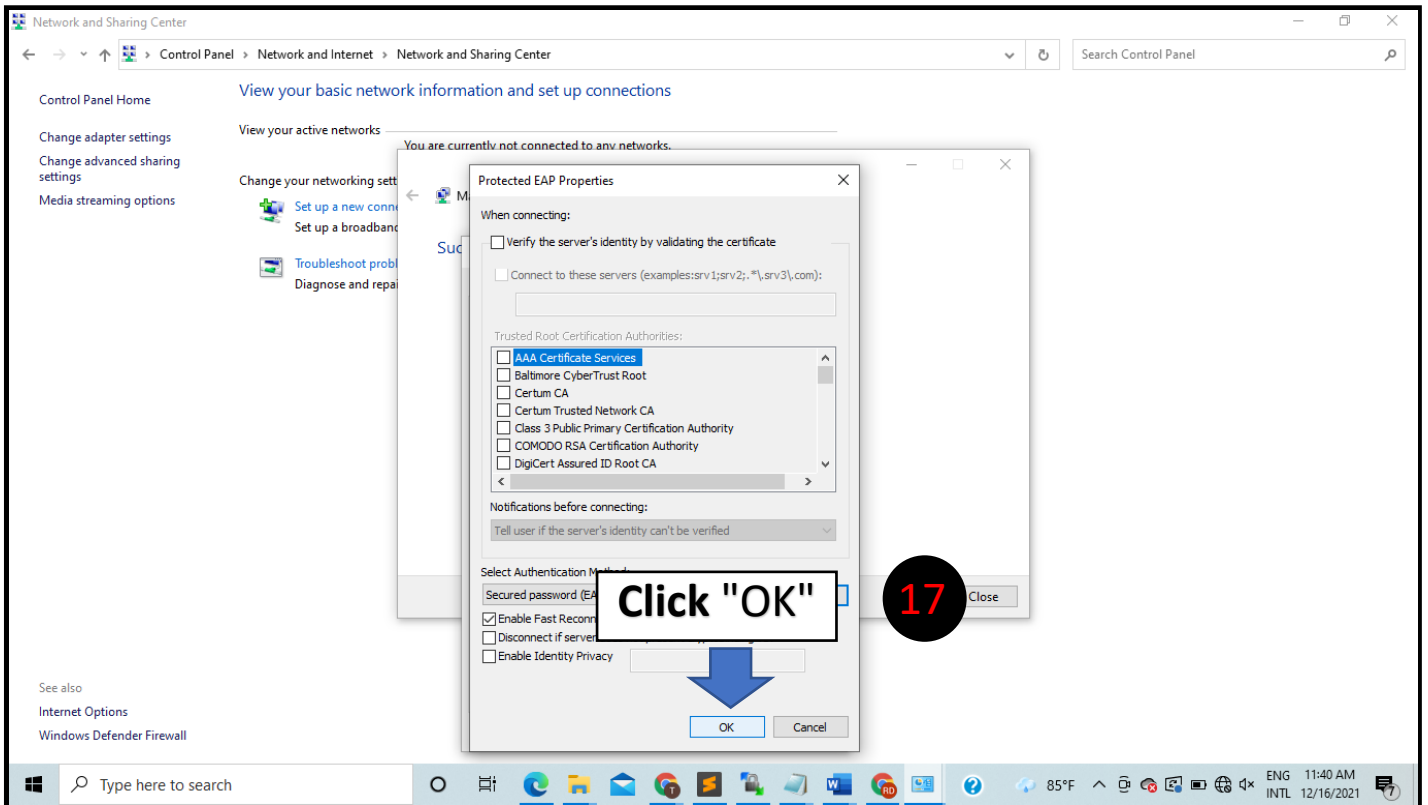
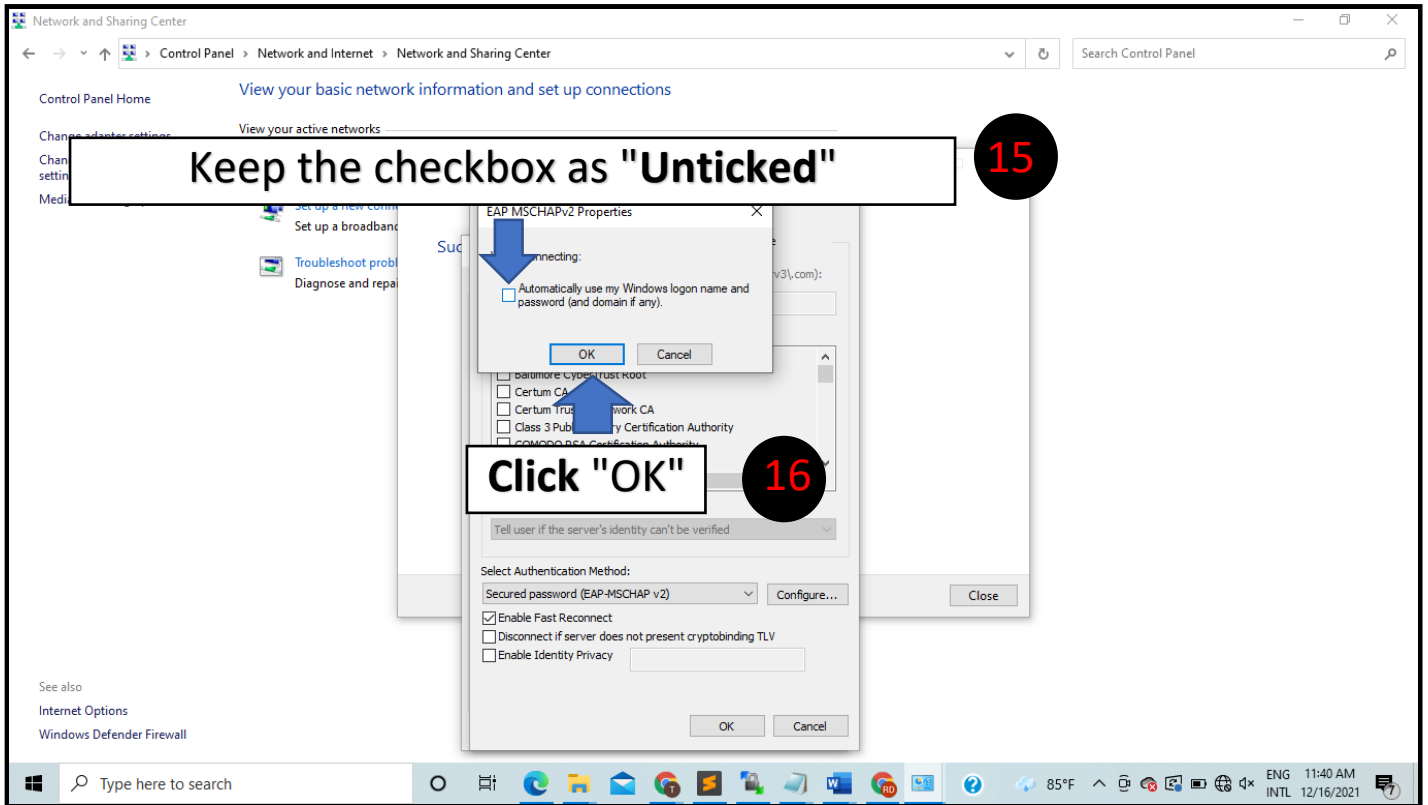


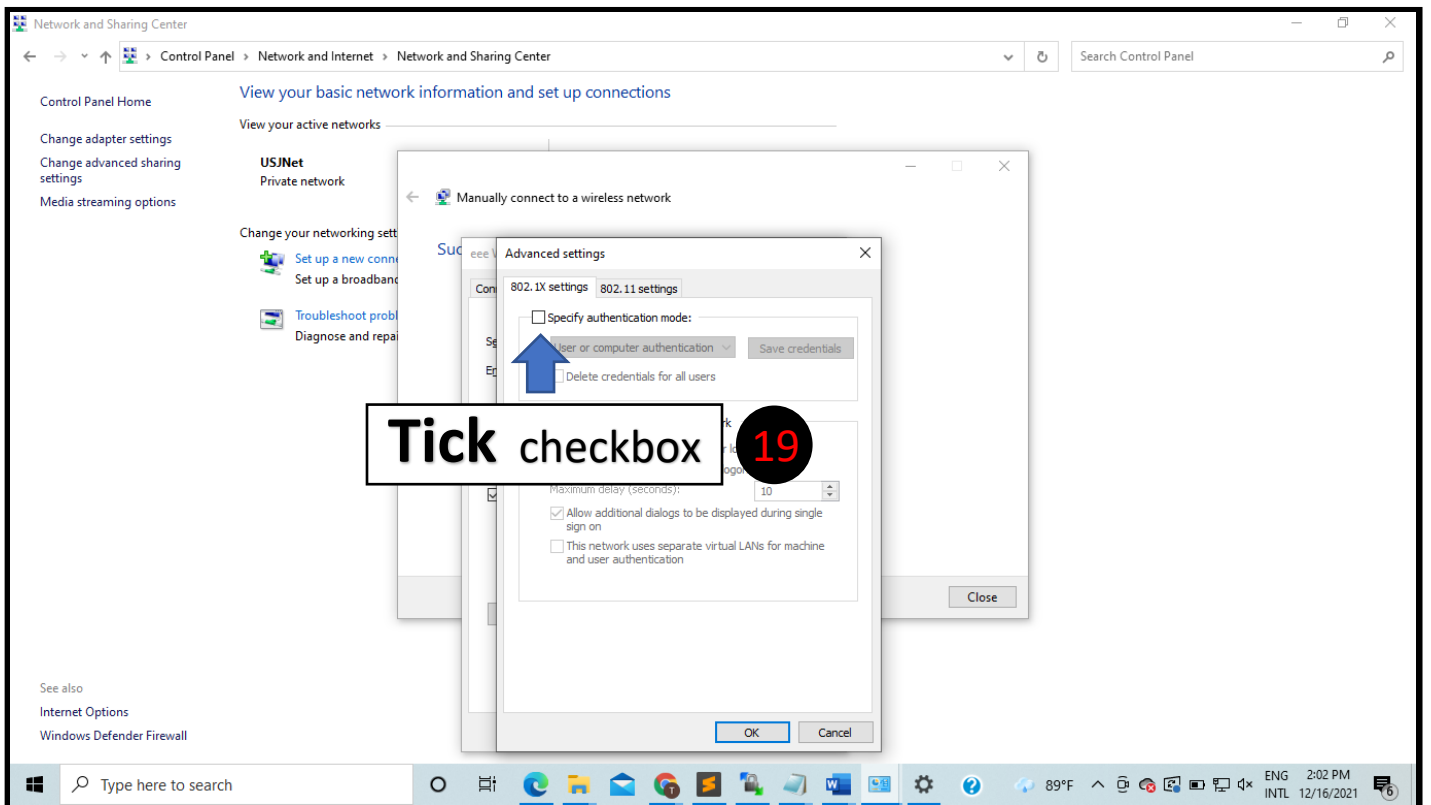
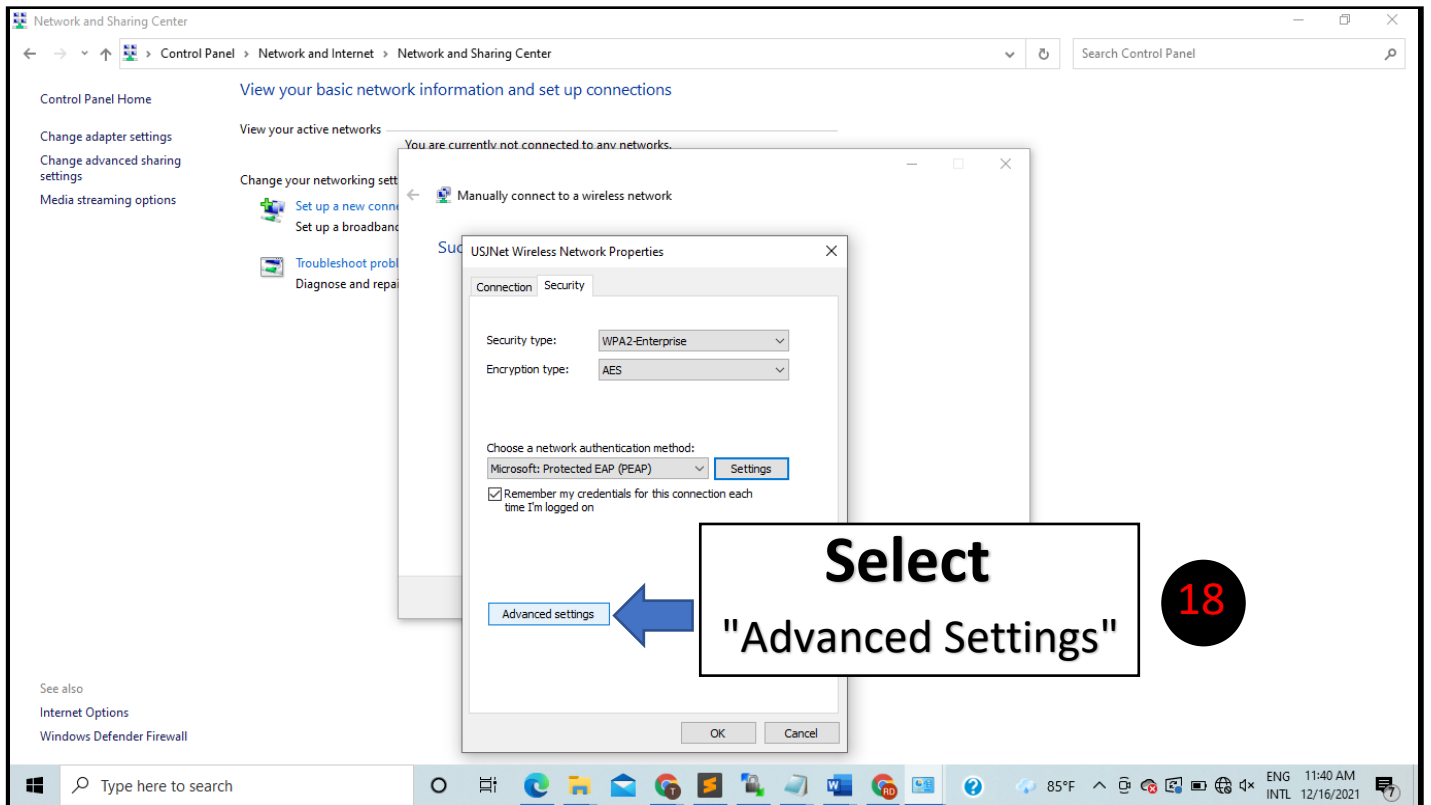


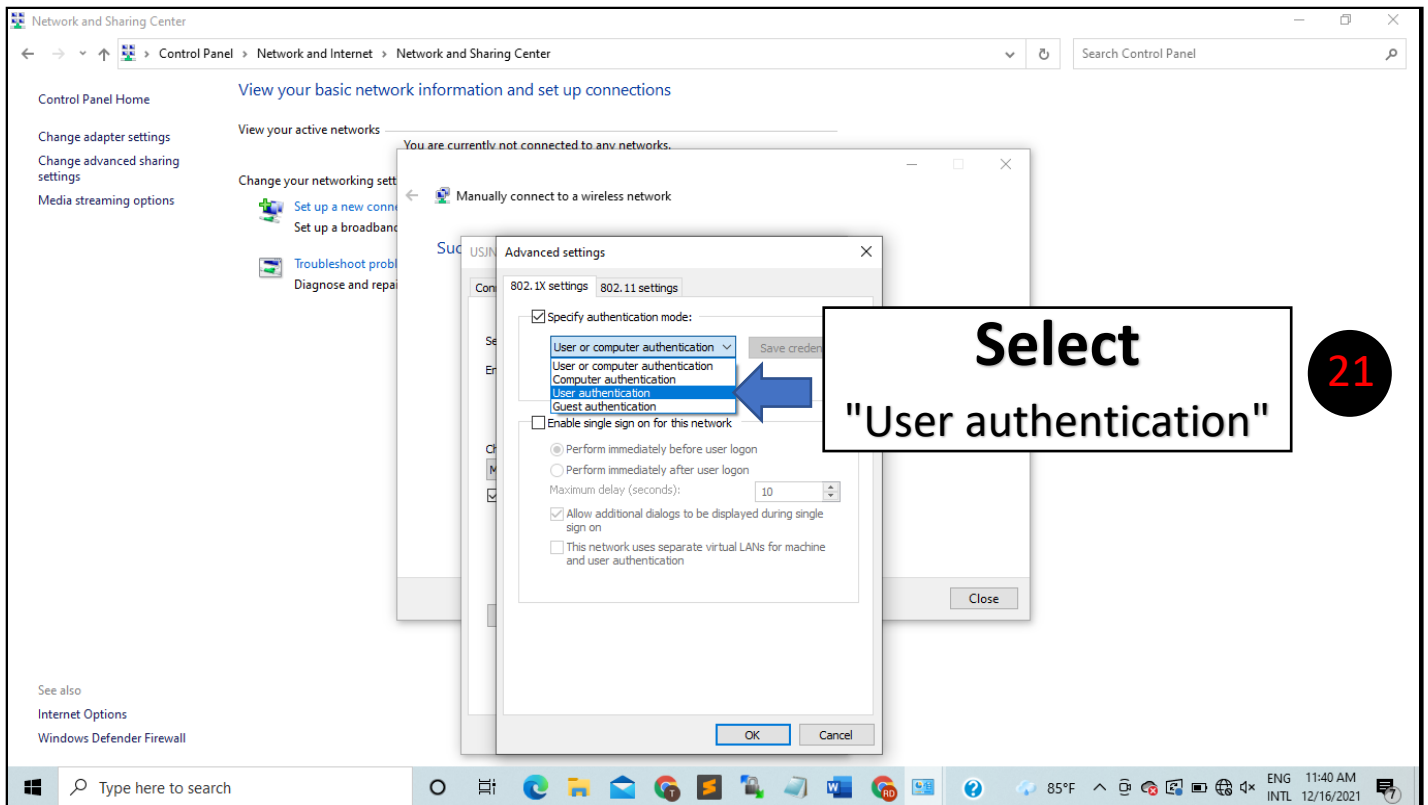
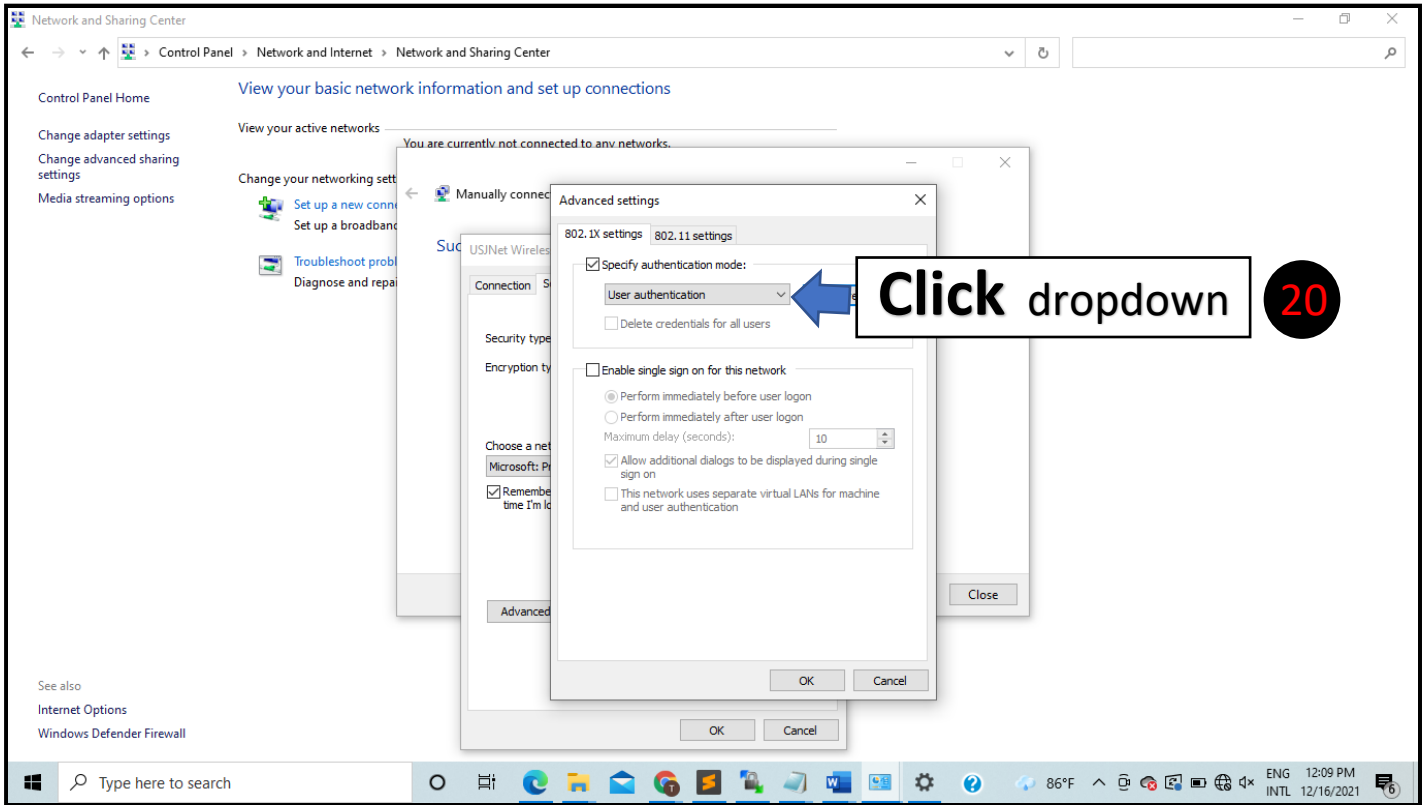


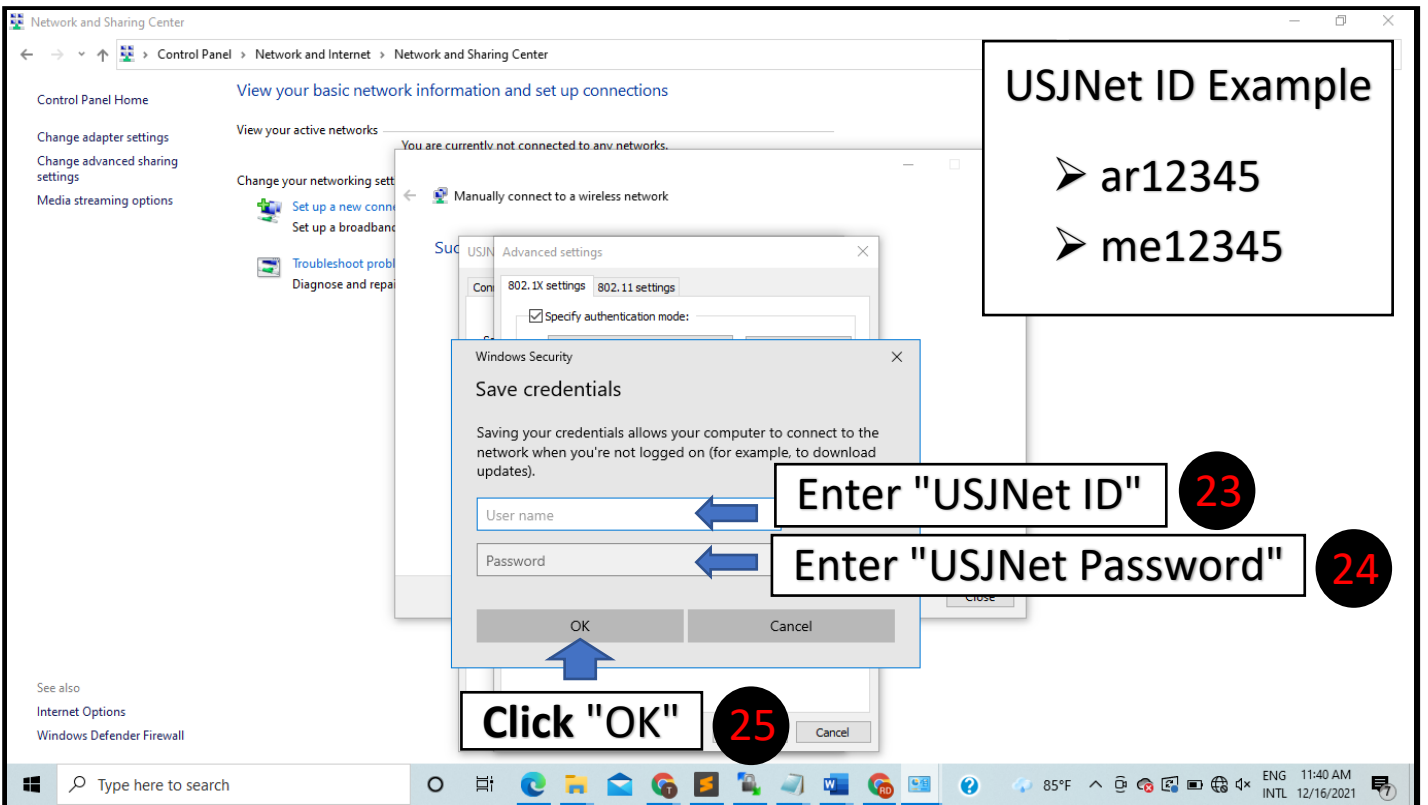
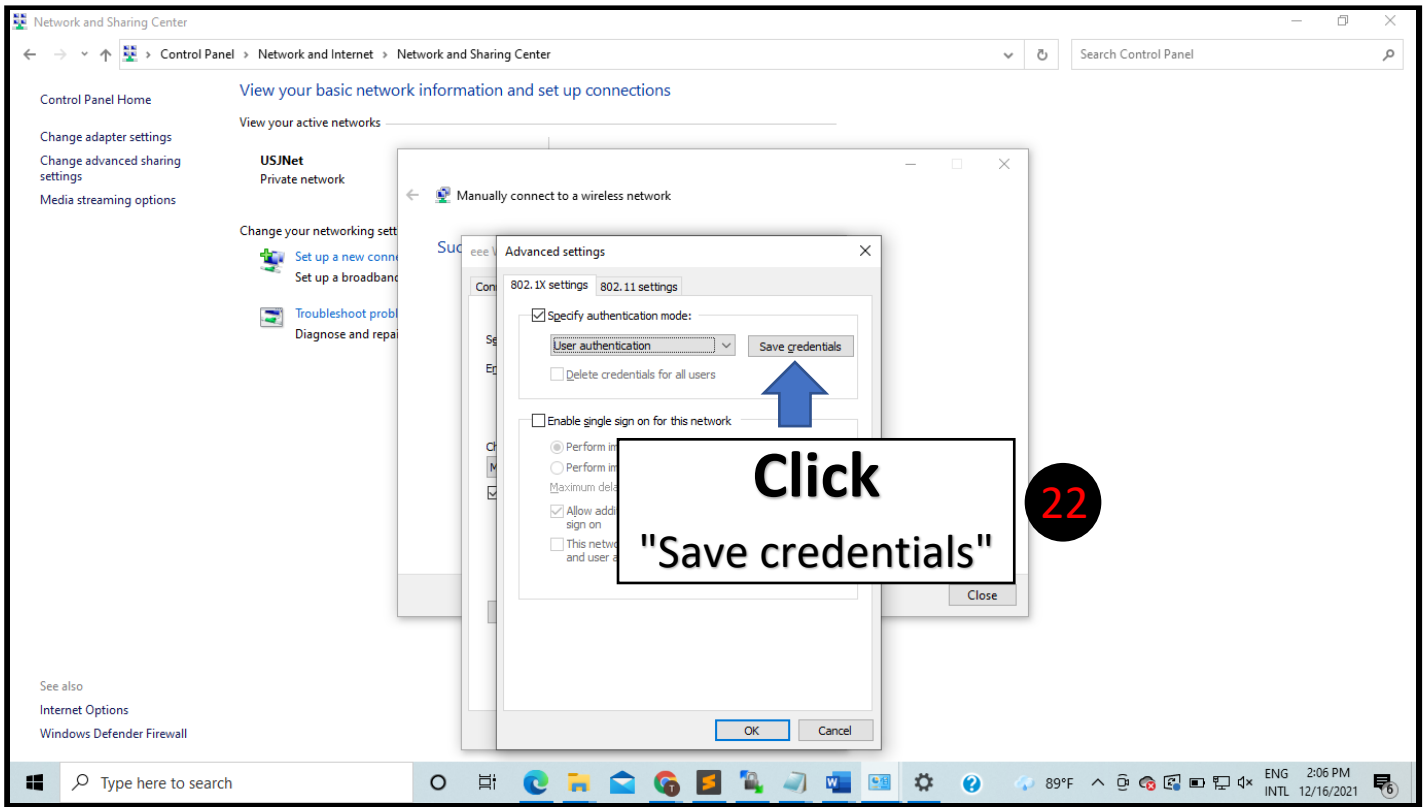


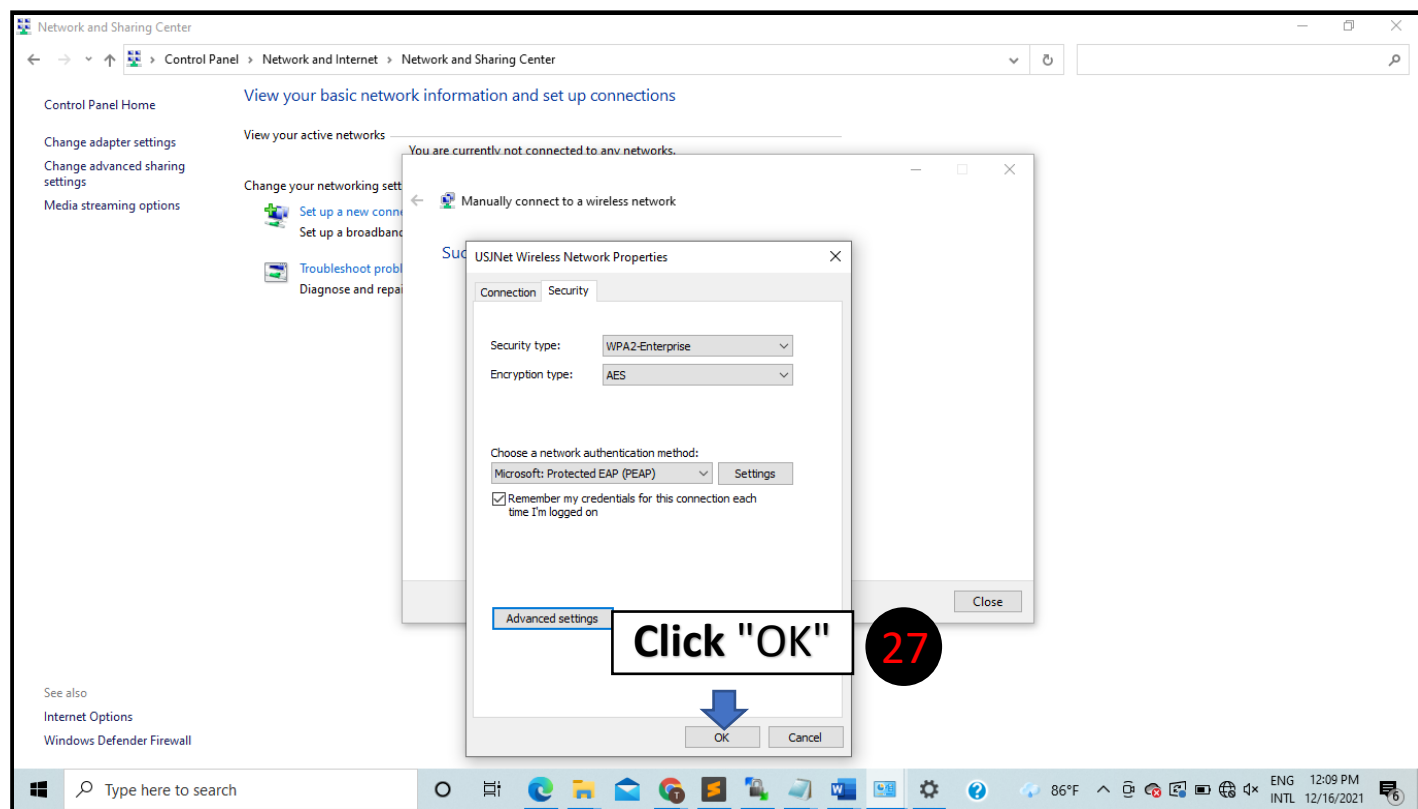
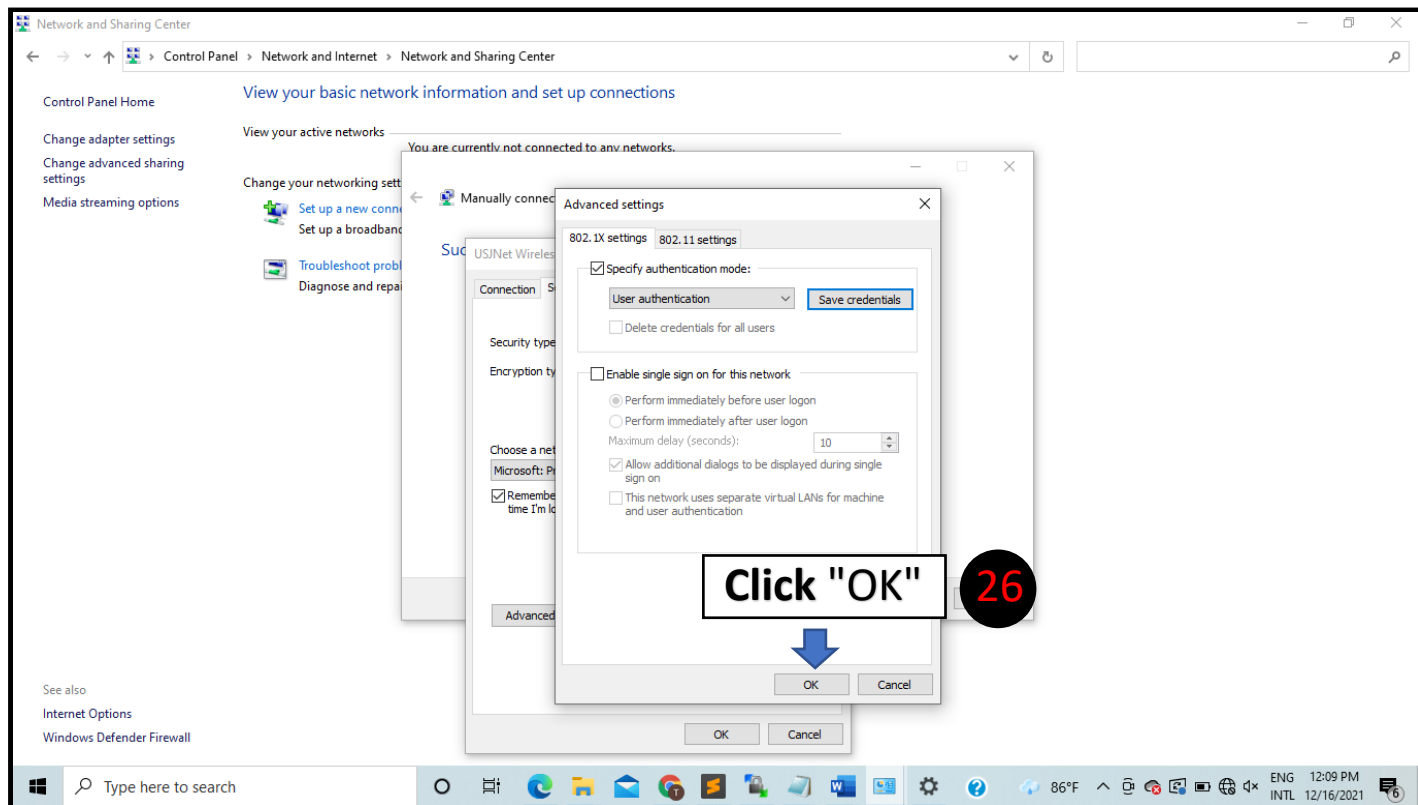


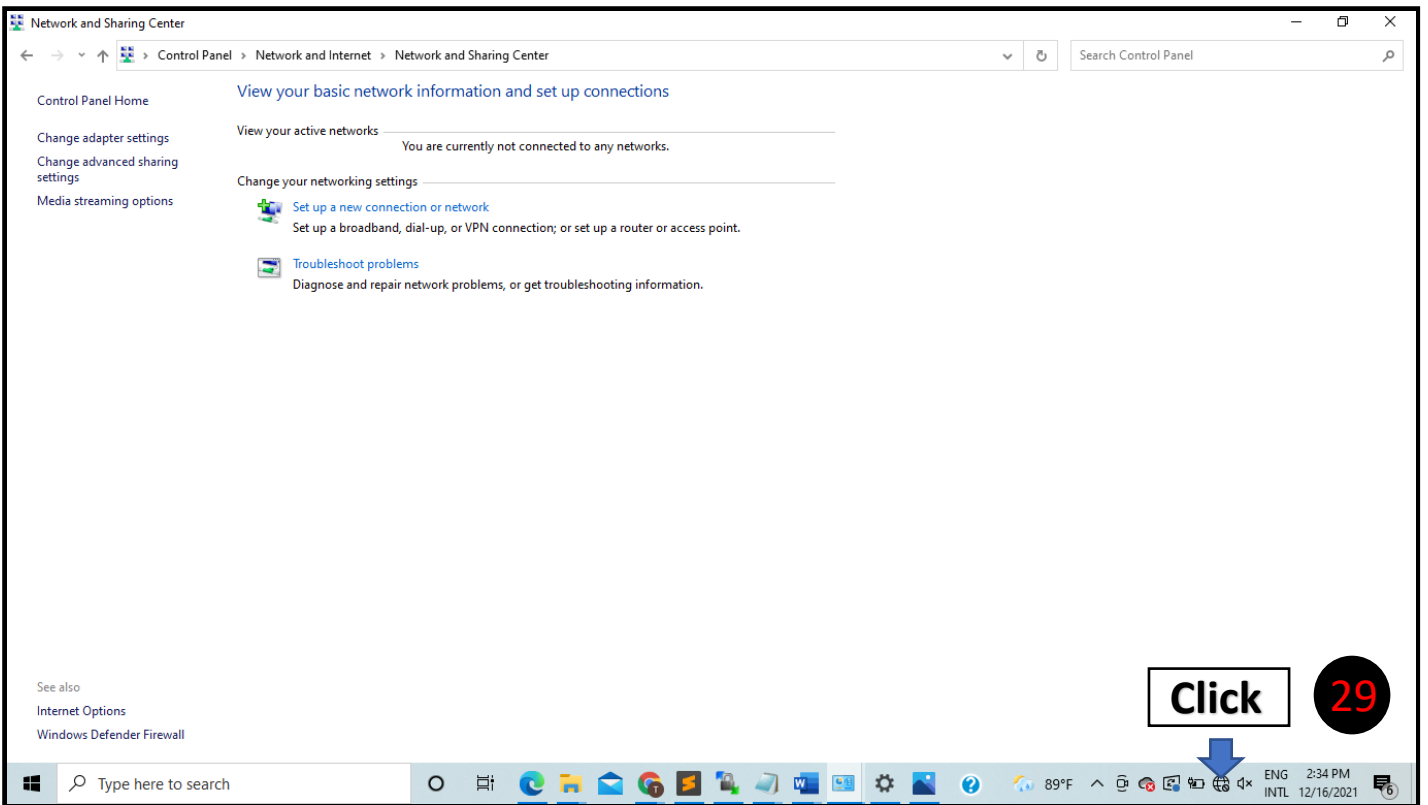
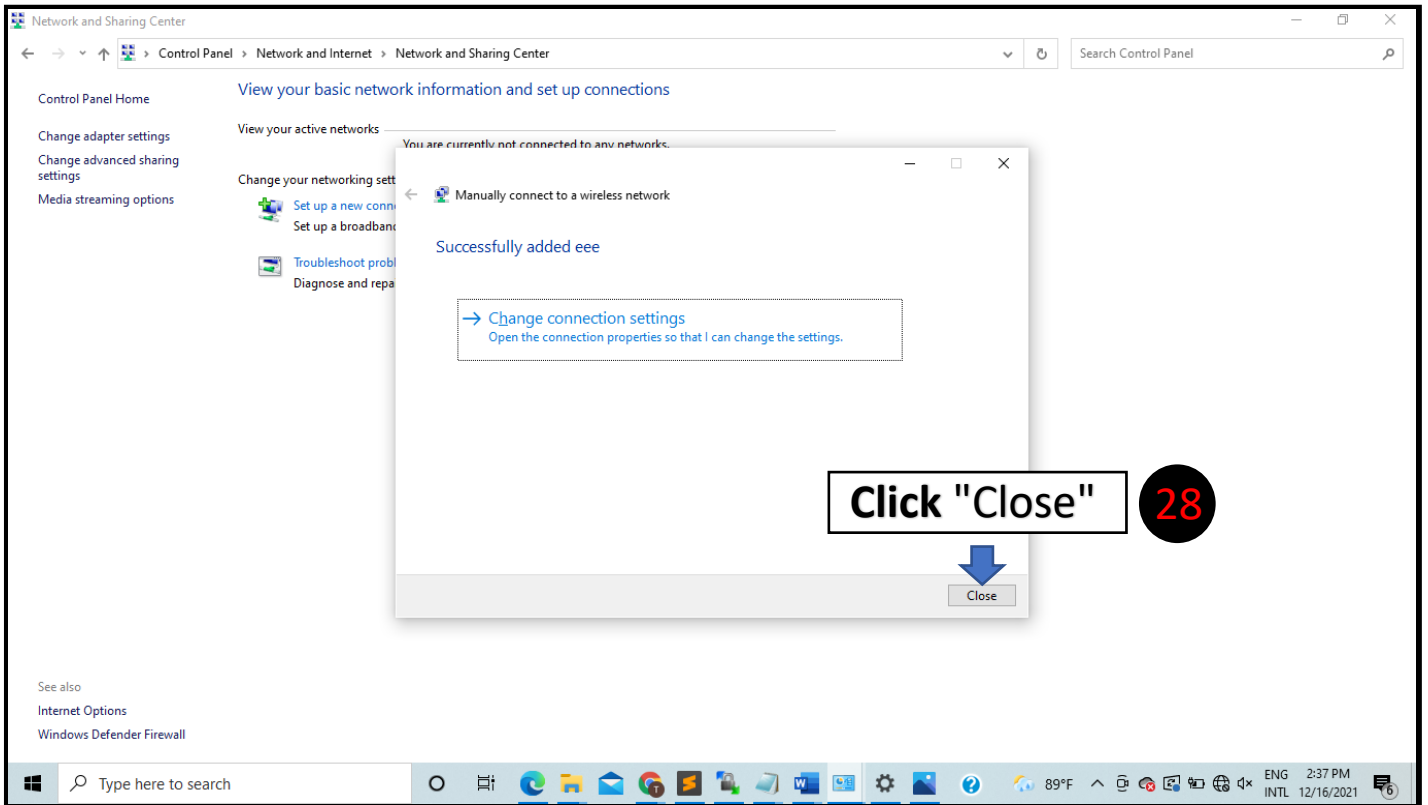












The screenshot shows the Windows Network and Sharing Center. The main heading is "View your basic network information and set up connections". Under "View your active networks", it states "You are currently not connected to any networks." Under "Change your networking settings", there are three options: "Set up a new connection or network" (with a sub-description "Set up a broadband, dial-up, or VPN connection; or set up a router or access point."), "Troubleshoot problems" (with a sub-description "Diagnose and repair network problems, or get troubleshooting information."), and "See also" with links to "Internet Options" and "Windows Defender Firewall".

On the right side, a network connection menu is open, listing several Wi-Fi networks: "USJNet Secured" (with a "Connect automatically" checkbox and a "Connect" button), "Guest", "eduroam", "CITS", "SLT-4G_14EE8D", and "TP-LINK_AP_09DE". A blue arrow points to the "Connect" button for "USJNet Secured", which is highlighted by a white box with the text "Connect". A red circle with the number "30" is overlaid on the right side of the network list.

At the bottom, the Windows taskbar is visible, showing the search bar, taskbar icons, system tray with temperature (86°F), and system clock (12:09 PM INTL 12/16/2021).